

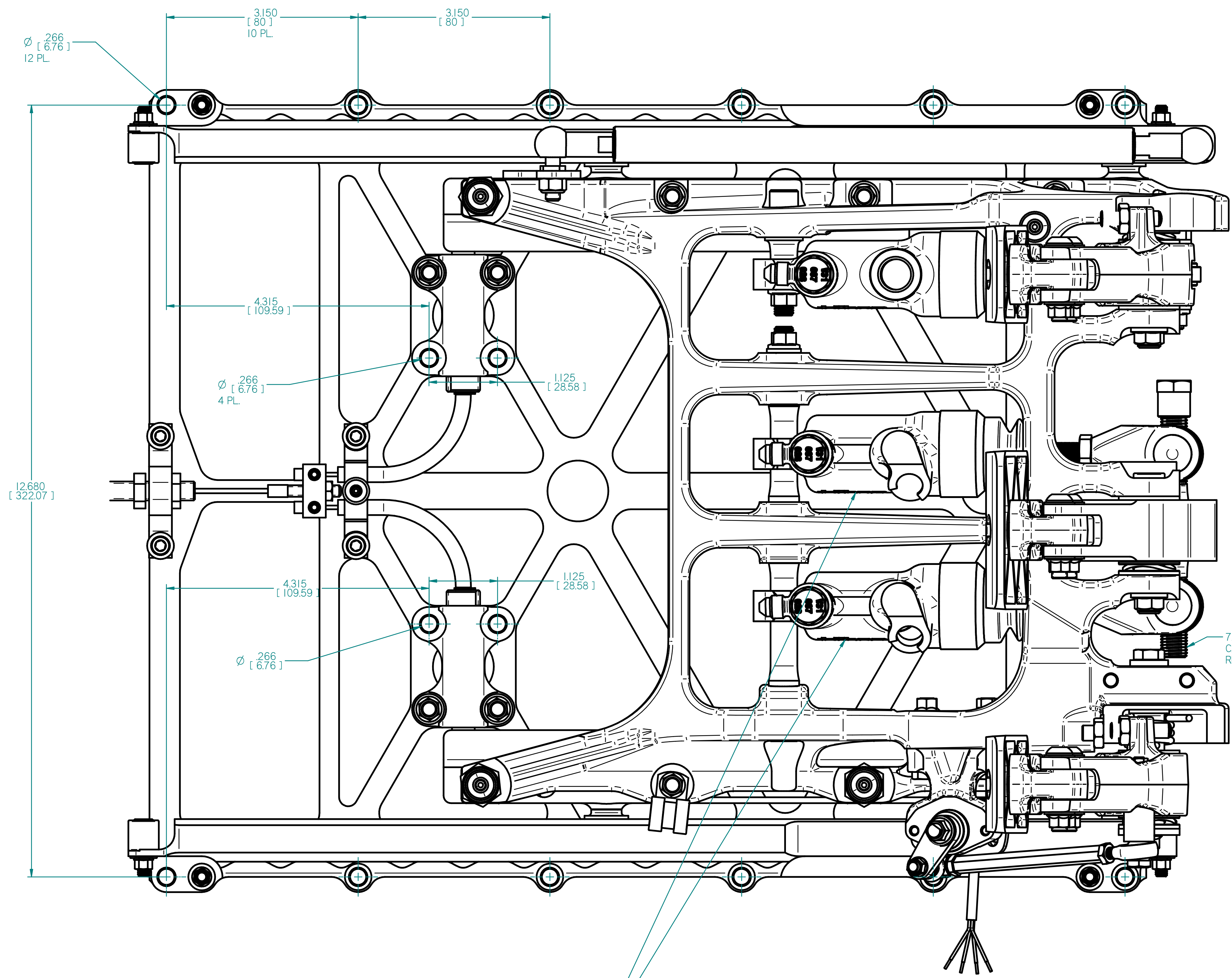
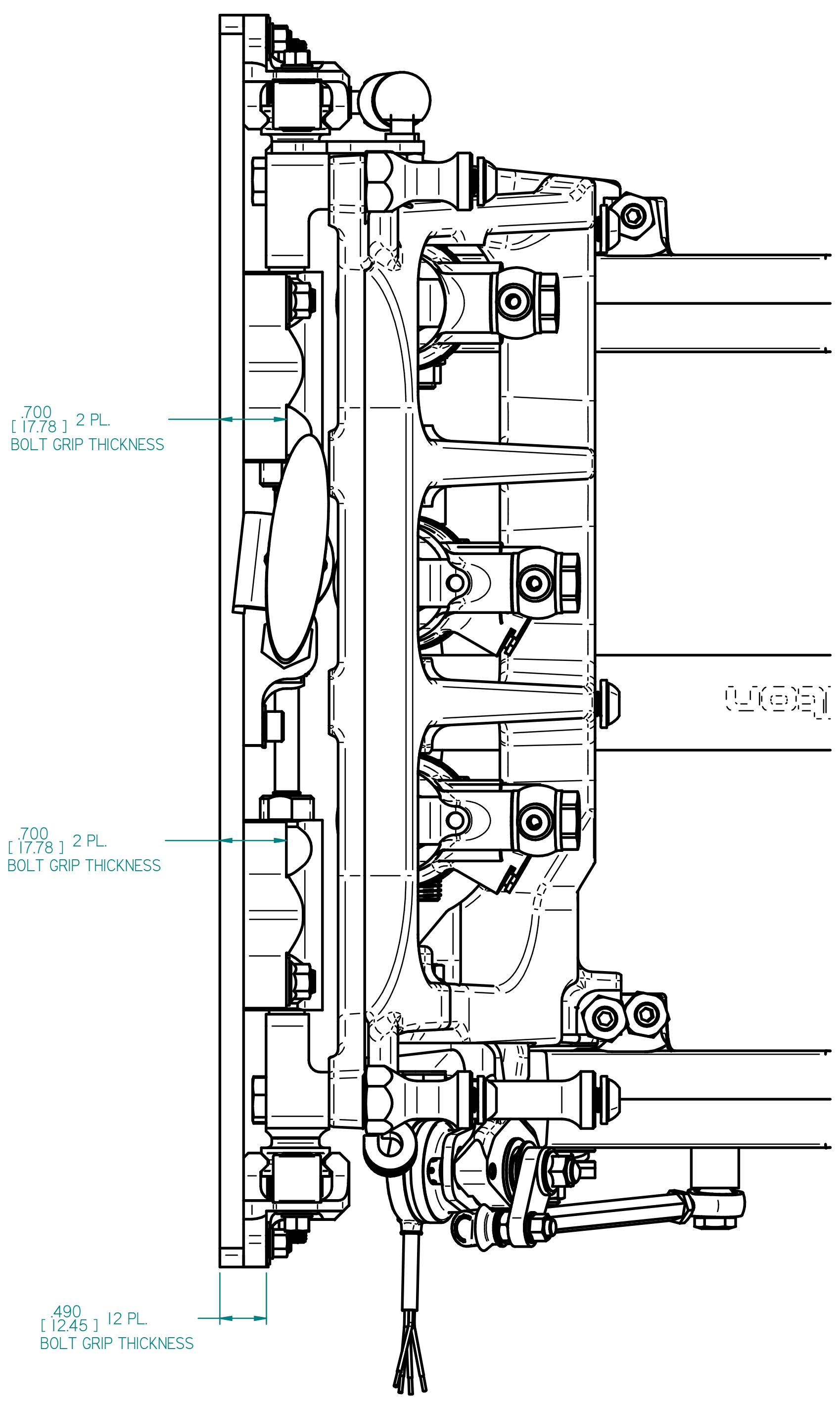
- NOTES:
1. DIMENSIONS AND TOLERANCES PER ASME Y14.5 - 2009
 2. UNLESS OTHERWISE SPECIFIED, ALL DIMENSIONS ARE IN INCHES.
 3. BREAK SHARP EDGES .005-.010.

TILTON ENGINEERING, INC. 25 EASY STREET P.O. BOX 1787 BUELLTON, CALIFORNIA 93427 USA PHONE: (805) 688-2353 FAX: (805) 688-2745 WWW.TILTONRACING.COM				 THIS DRAWING USES THIRD ANGLE PROJECTION	
TITLE: INSTALLATION DRAWING, PEDAL ASSEMBLY, UNDERFOOT ADJUSTABLE SLIDING SYSTEM					
DRN BY	LUND	CHKD	WAHL	SCALE	1 : 2
P/N	72-850	DATE	7/23/2018	SHEET	1 OF 3
				DWG	6767
				REV	NC

"This document contains proprietary information of TILTON ENGINEERING, INC., and its receipt or possession does not convey the rights to reproduce, disclose its contents, or to manufacture, use or sell anything it may describe. Reproduction, disclosure, or use without specific written authorization of TILTON ENGINEERING, INC. is strictly forbidden."

TILTON ENGINEERING

16 MOUNTING HOLES FOR M6 OR 1/4" FASTENERS TO VEHICLE FLOOR STRUCTURE AS SHOWN



72-873 BALANCE BAR CAN ACCEPT ALL TILTON REMOTE CABLE ADJUSTERS

TILTON 78 OR 79 SERIES PIVOT STYLE MASTER CYLINDERS

PEDAL ASSEMBLY IS COMPATIBLE WITH TILTON ENGINEERING 78 OR 79 SERIES MASTER CYLINDERS AT BOTH BRAKE PEDAL LOCATIONS 78 SERIES MASTER CYLINDERS AT CLUTCH PEDAL ALL SOLD SEPARATELY
78/79 SERIES MASTER CYLINDERS SHOWN HERE ARE FOR ILLUSTRATION PURPOSES ONLY AND ARE NOT INCLUDED WITH PEDAL ASSEMBLY

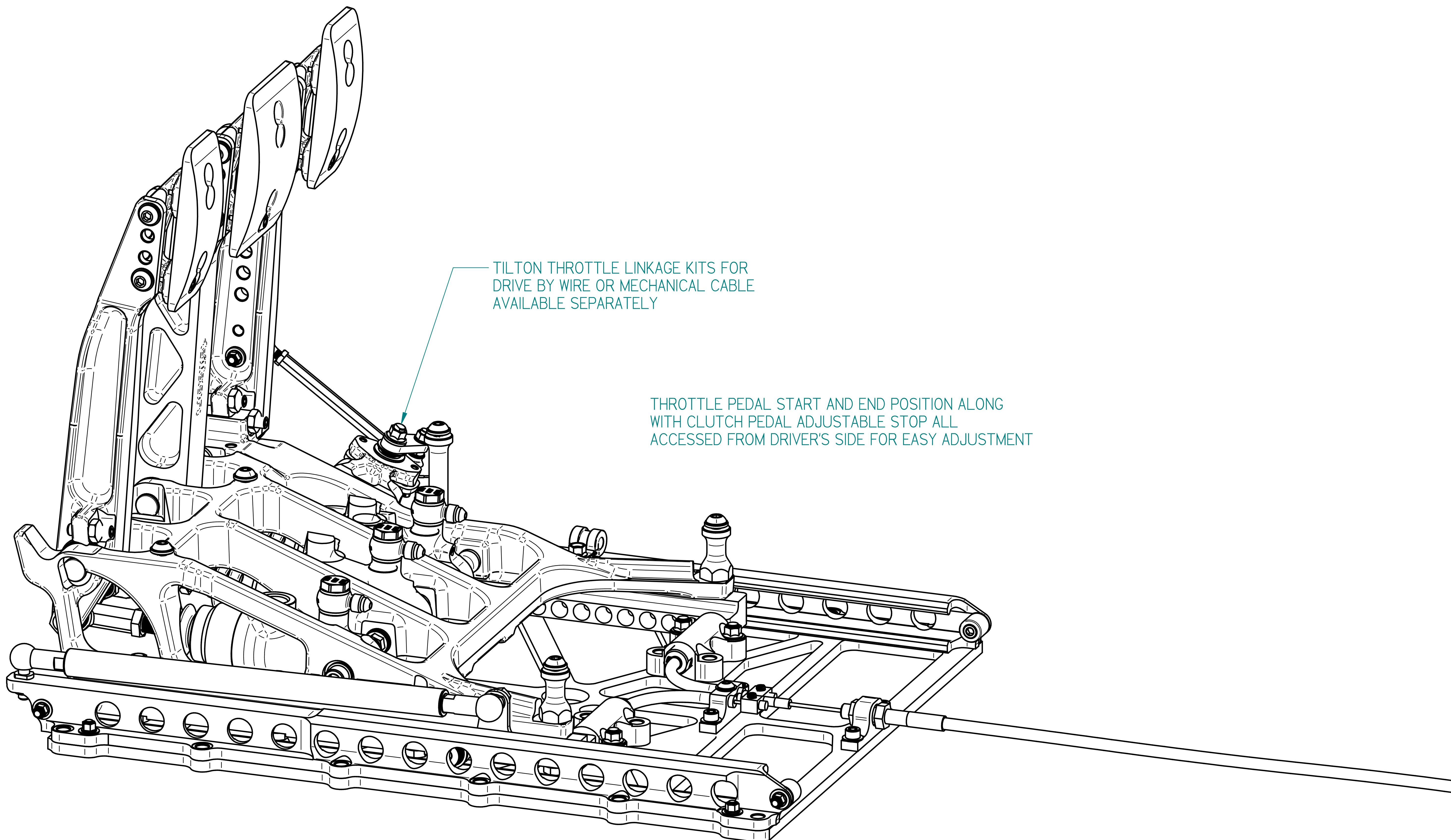
- NOTES:
1. DIMENSIONS AND TOLERANCES PER ASME Y14.5 - 2009
 2. UNLESS OTHERWISE SPECIFIED, ALL DIMENSIONS ARE IN INCHES.
 3. BREAK SHARP EDGES .005-.010.

TILTON ENGINEERING, INC. 25 EASY STREET P.O. BOX 1787 BUELLTON, CALIFORNIA 93427 USA PHONE: (805) 688-2353 FAX: (805) 688-2745 WWW.TILTONRACING.COM				<p>THIS DRAWING USES THIRD ANGLE PROJECTION</p>
TITLE: INSTALLATION DRAWING, PEDAL ASSEMBLY, UNDERFOOT ADJUSTABLE SLIDING SYSTEM				
DRN BY	LUND	CHK'D	WAHL	SCALE 1:1
P/N	72-850	DATE	7/23/2018	SHEET 2 OF 3
				DWG
				REV
				6767
				NC

TILTON ENGINEERING
INC.

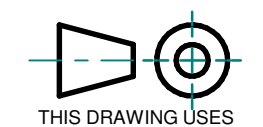
"This document contains proprietary information of TILTON ENGINEERING, INC., and its receipt or possession does not convey the rights to reproduce, disclose its contents, or to manufacture, use or sell anything it may describe. Reproduction, disclosure, or use without specific written authorization of TILTON ENGINEERING, INC. is strictly forbidden."

REV	ECN	DATE	BY	CHANGE OR ADDITION
-----	-----	------	----	--------------------



"This document contains proprietary information of TILTON ENGINEERING, INC., and its receipt or possession does not convey the rights to reproduce, disclose its contents, or to manufacture, use or sell anything it may describe. Reproduction, disclosure, or use without specific written authorization of TILTON ENGINEERING, INC. is strictly forbidden."

TILTON ENGINEERING
INC.

TILTON ENGINEERING, INC. 25 EASY STREET P.O. BOX 1787 BUELLTON, CALIFORNIA 93427 USA PHONE: (805) 688-2353 FAX: (805) 688-2745 WWW.TILTONRACING.COM				 <small>THIS DRAWING USES THIRD ANGLE PROJECTION</small>	
TITLE: INSTALLATION DRAWING, PEDAL ASSEMBLY, UNDERFOOT ADJUSTABLE SLIDING SYSTEM					
DRN BY	LUND	CHK'D	WAHL	SCALE	1 : 1
P/N	72-850	DATE	7/23/2018	SHEET	3 OF 3
				DWG	6767
				REV	NC