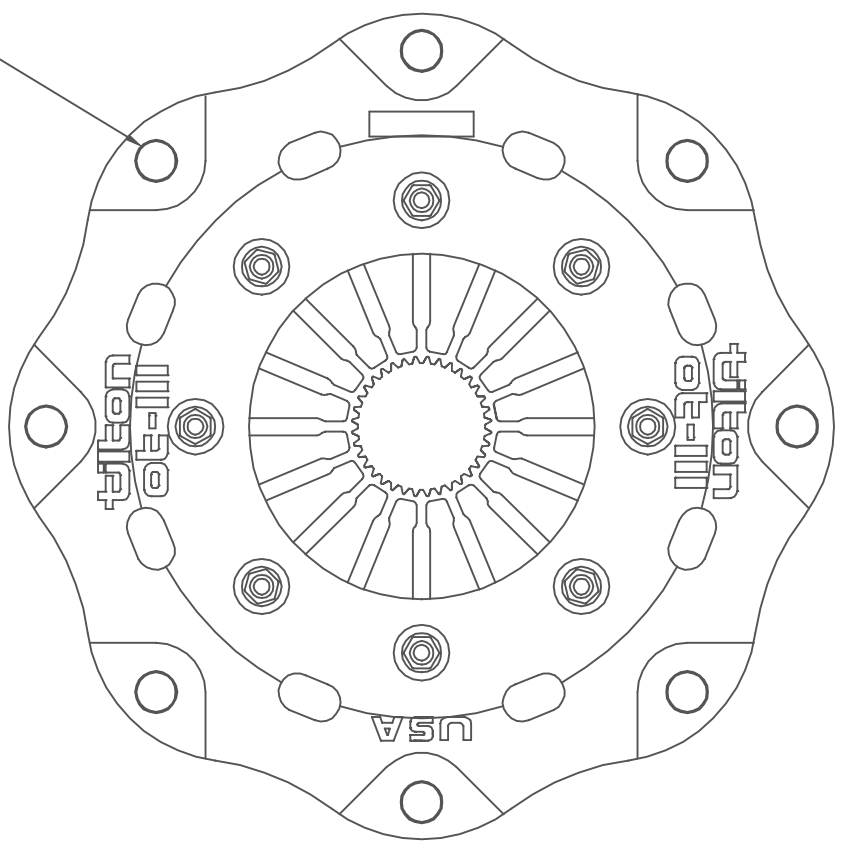
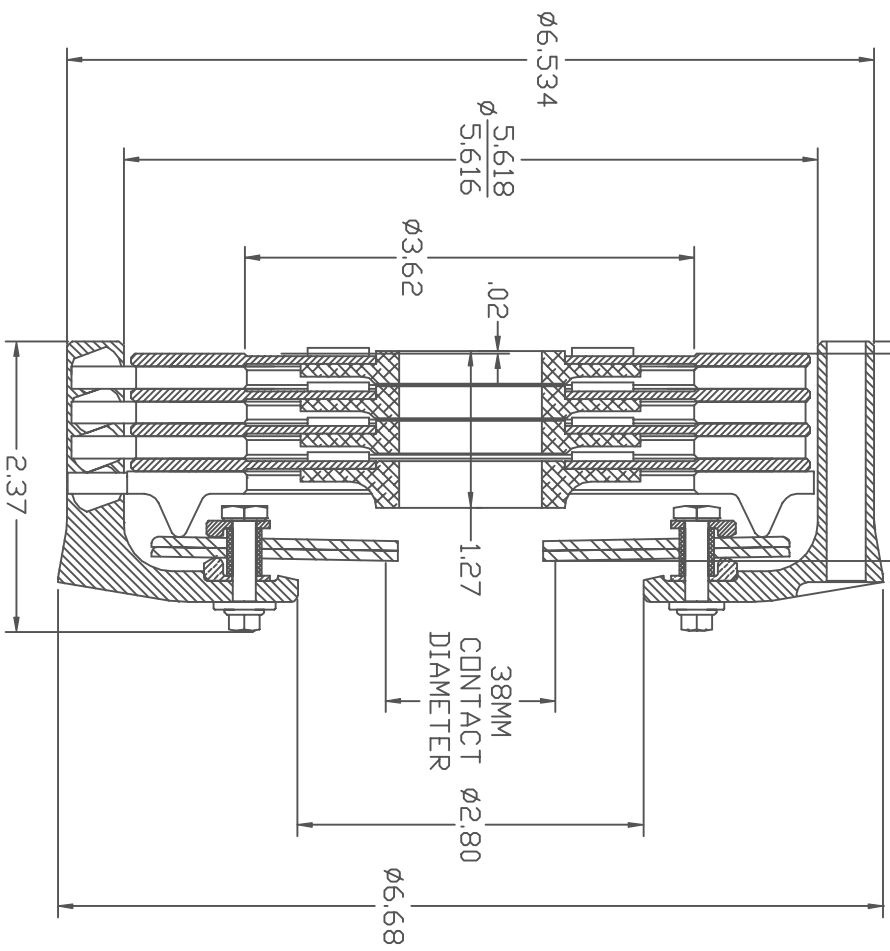


1.951 (GRIP)

1.66 (NEW)
SET-UP HEIGHT

Tilton racing clutch



ASSEMBLY WEIGHT	8.87 LB
ASSEMBLY INERTIA	47.0 LB-IN ²
RELEASE LOAD	750 LB MAX
RELEASE TRAVEL	.16 IN
RELEASE BEARING	38mm

ILLUSTRATED WITH DISC PACK P/N 64140-9-ACCC-36

ZONE	CHKD	DATE	REV	ECN	CHANGE OR ADDITION

TILTON ENGINEERING, INC.
 25 EASY STREET, P.O. BOX 1787, BUELLTON, CA 93427 805/688-2353
 FAX 805/688-2745

TITLE:	5.5" METALLIC CLUTCH FOUR PLATE
DRAWN BY	WAHL
CHKD	ONEIL
P/N	67-004HG
DATE	11/19/98
SCALE	1 : 1
SHEET	1 OF 1
DWG	3901



This document contains proprietary information of TILTON ENGINEERING, INC., and its receipt or possession does not convey the rights to reproduce, disclose its contents, or to manufacture, use or sell anything it may describe. Reproduction, disclosure, or use without specific written authorization of TILTON ENGINEERING INC. is strictly forbidden.