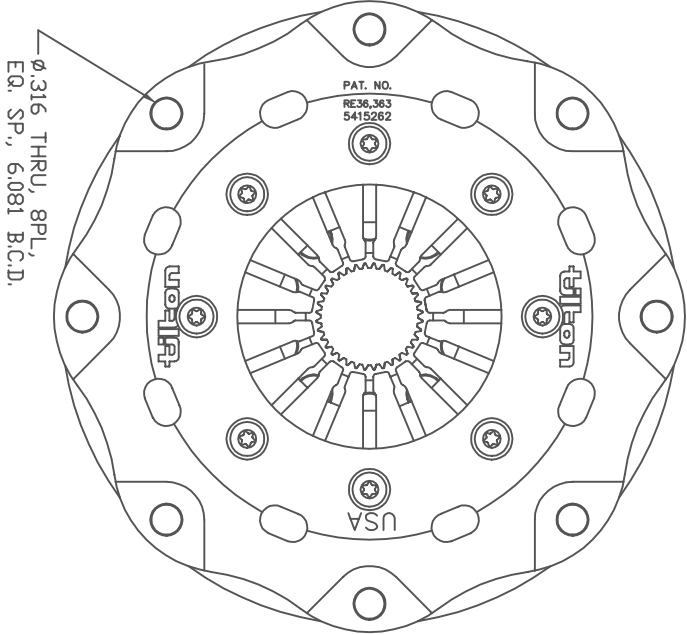
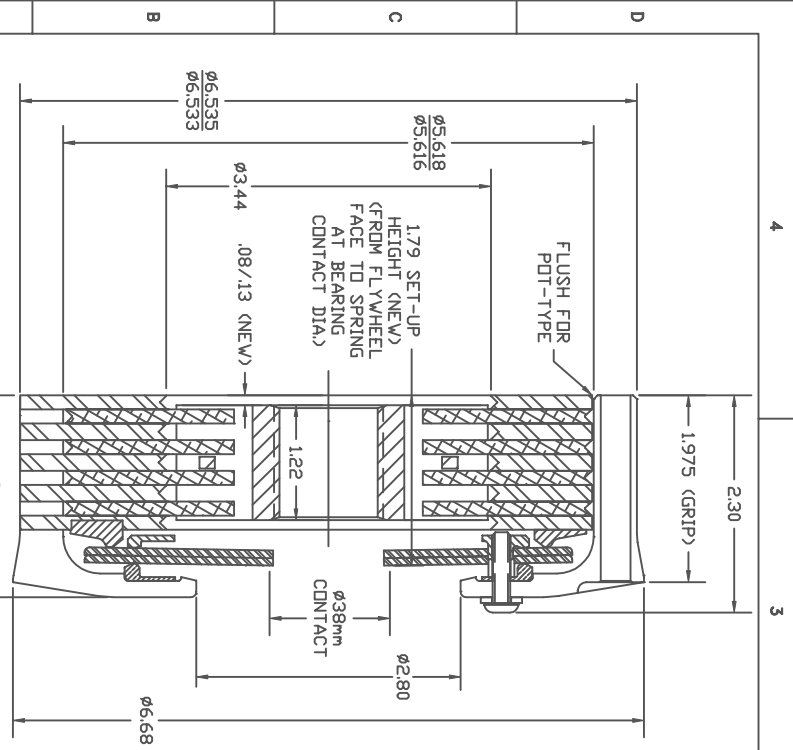


Tilton Carbon Clutch



ASSEMBLY WEIGHT	5.2 LB
ASSEMBLY INERTIA	25.3 LB-IN ²
RELEASE LOAD	750 LB MAX
RELEASE TRAVEL	.16 IN
RELEASE BEARING	38mm

ILLUSTRATED WITH HUB P/N 655-451S-36

TILTON ENGINEERING, INC. FAX 805/688-2745
 25 EASY STREET, P.O. BOX 1787, BUELLTON, CA 93427 805/688-2353

TITLE: 5.5" CARBON CLUTCH
 FOUR PLATE - POT TYPE ONLY

DRAWN BY WAHL
 P/N 6554XXX-B

CHKD ONEIL
 DATE 6/9/00

SCALE 1 : 1
 SHEET 1 OF 1

DWG 4021

tiltonENGINEERING INC.

This document contains proprietary information of TILTON ENGINEERING, INC. and its receipt or possession does not convey the right to reproduce, disclose for outside, or to manufacture, use or sell anything in any manner. Reproduction, disclosure, or use without specific written authorization of TILTON ENGINEERING, INC. is strictly forbidden.