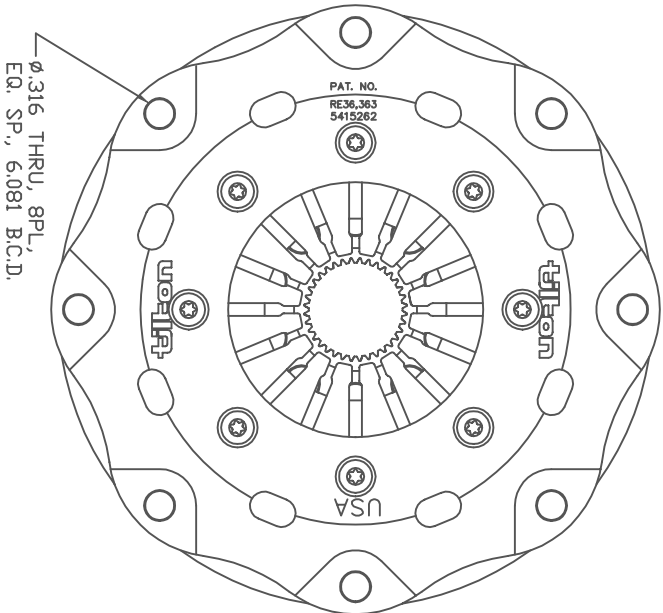
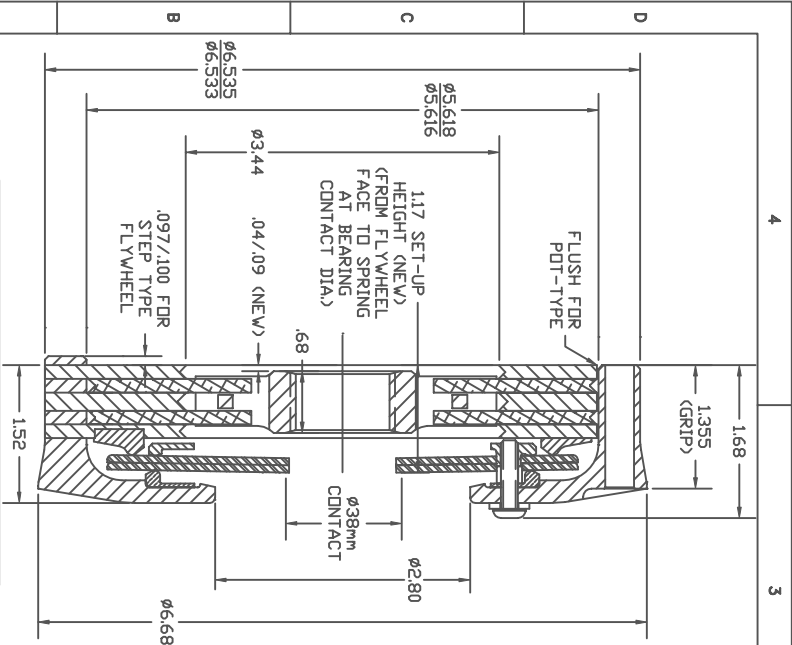


Tiltan racing clutch



ASSEMBLY WEIGHT	3.7 LB
ASSEMBLY INERTIA	17.8 LB-IN <sup>2</sup>
RELEASE LOAD	750 LB MAX
RELEASE TRAVEL	.16 IN
RELEASE BEARING	38mm

ILLUSTRATED WITH HUB P/N 655-25IS-36

TILTAN ENGINEERING, INC. FAX 805/688-2745  
 25 EASY STREET, P.O. BOX 1787, BUELLTON, CA 93427 805/688-2353  
 TITLE: TWO PLATE - STEP AND POT TYPE SHOWN  
 DRAWN BY WAHL CHKD ONEL SCALE 1 : 1 DWG 4019  
 P/N 6552XXX-X DATE 5/31/00 SHEET 1 OF 1

**TILTAN ENGINEERING**

This document contains proprietary information of TILTAN ENGINEERING, INC., and its receipt or possession does not convey the right to reproduce, disclose its contents, or to manufacture, use or sell anything in any device, reproduction, distribution, or use without specific written authorization of TILTAN ENGINEERING INC. is strictly forbidden.