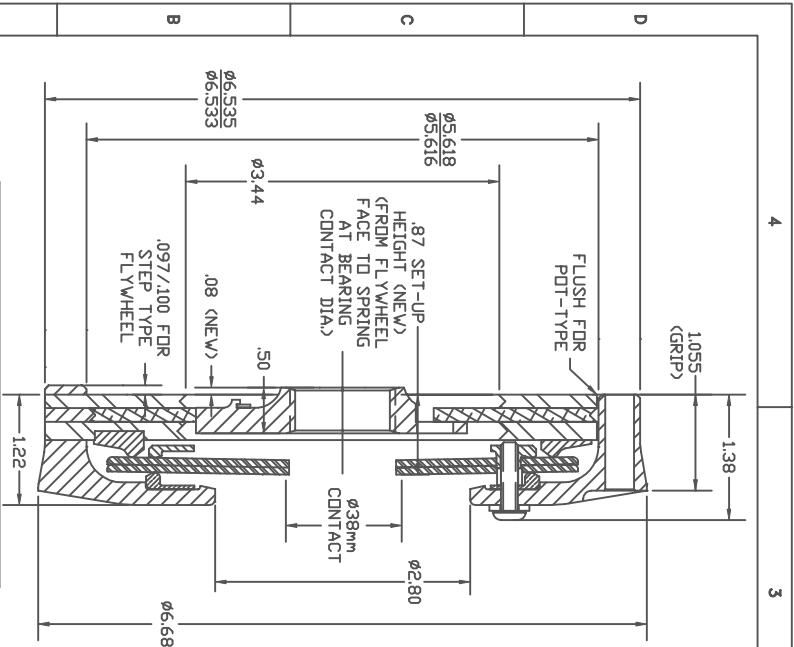


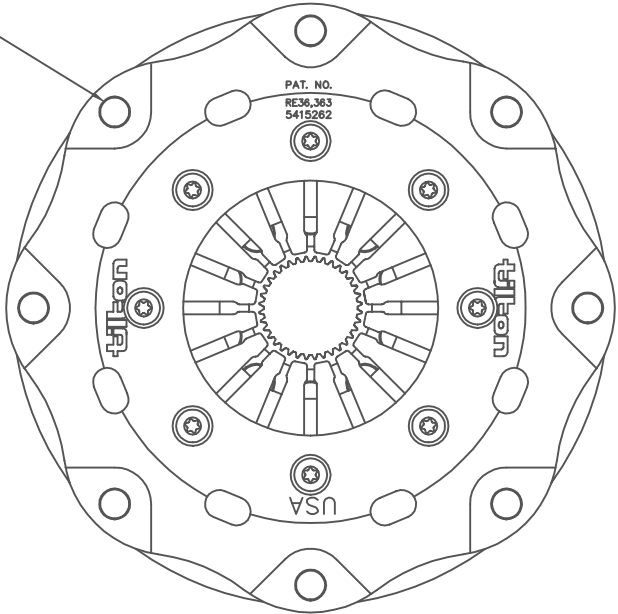
# Tiltron racing clutch



ASSEMBLY WEIGHT	3.0 LB
ASSEMBLY INERTIA	14.6 LB-IN <sup>2</sup>
RELEASE LOAD	750 LB MAX
RELEASE TRAVEL	.16 IN
RELEASE BEARING	38mm

ILLUSTRATED WITH HUB P/N 655-151S-36

Ø.316 THRU, 8PL,  
EQ. SP., 6.081 B.C.D.



**TILTON ENGINEERING, INC.** FAX 805/688-2745  
 25 EASY STREET, P.O. BOX 1787, BUELLTON, CA 93427 805/688-2353

TITLE: SINGLE PLATE - STEP AND POT TYPE SHOWN  
 DRAWN BY WAHL CHKD ONEL SCALE 1 : 1 DWG 4018  
 P/N 6551XX-X DATE 6/9/00 SHEET 1 OF 1